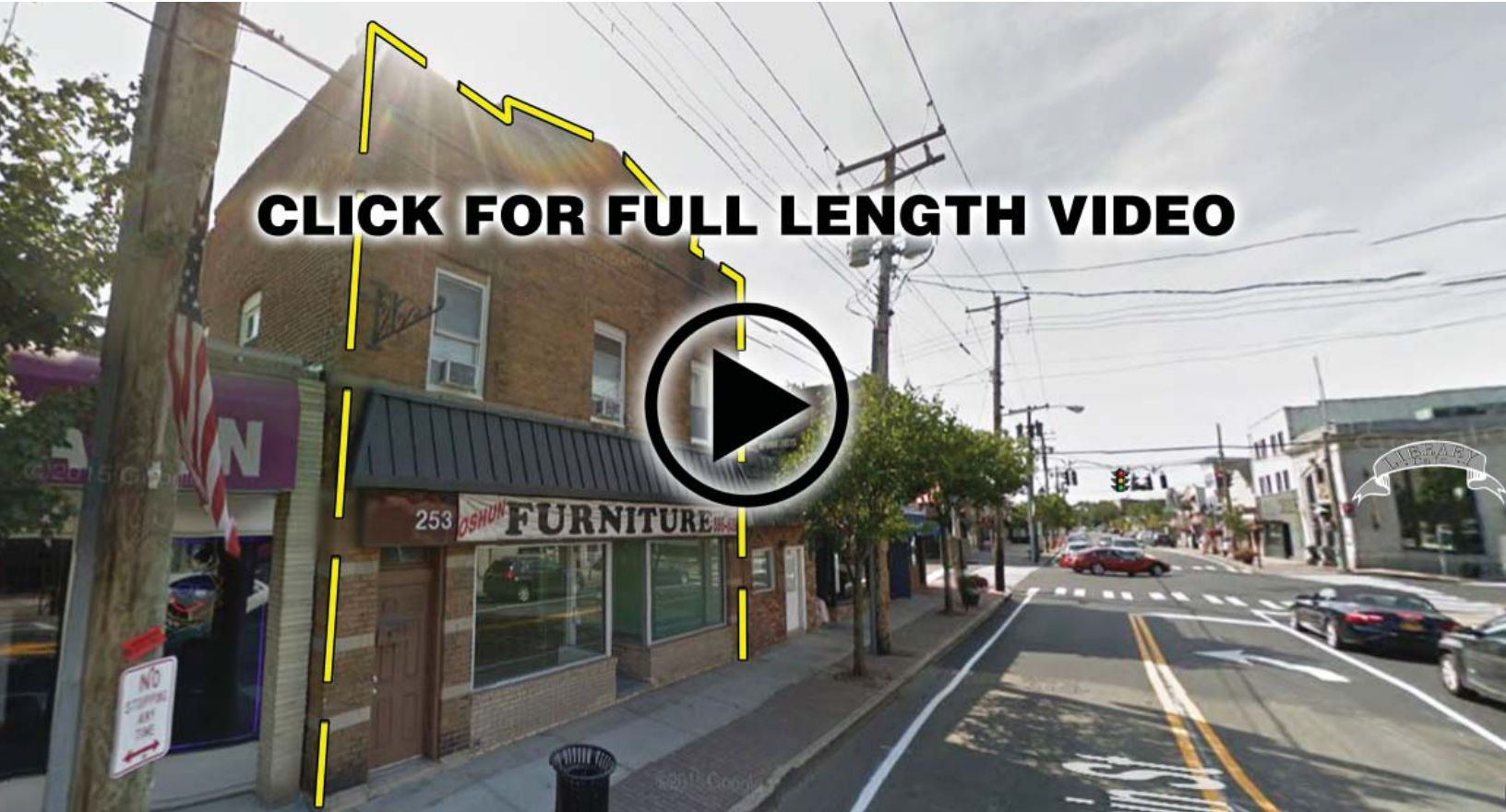


farminingdale, ny

253 main street

space available in vibrant downtown farmingdale village | for lease



CLICK FOR FULL LENGTH VIDEO

DEMOGRAPHICS	1 MILE	3 MILES	5 MILES
Population	14,110	110,097	366,706
Median HHI	\$87,406	\$92,544	\$93,871
Daytime Population	7,538	80,961	197,967

Available	2,100 square feet
Asking Rent	Upon Request
Extras	TBD
Area Retail	La Bottega, Brickwell Cycling, Synergy Fitness, Kumon Learning Center, Croxley's Public House & Garden, Tre Scalini, Library Cafe, Chase Bank, CVS and many more
Comments	<ul style="list-style-type: none">• located near the signalized intersection of Conklin Street 22,405 vehicles per day and Main Street with 10,918 vehicles per day• close proximity to Farmingdale LIRR train station with 4,625 riders daily

For More Information:

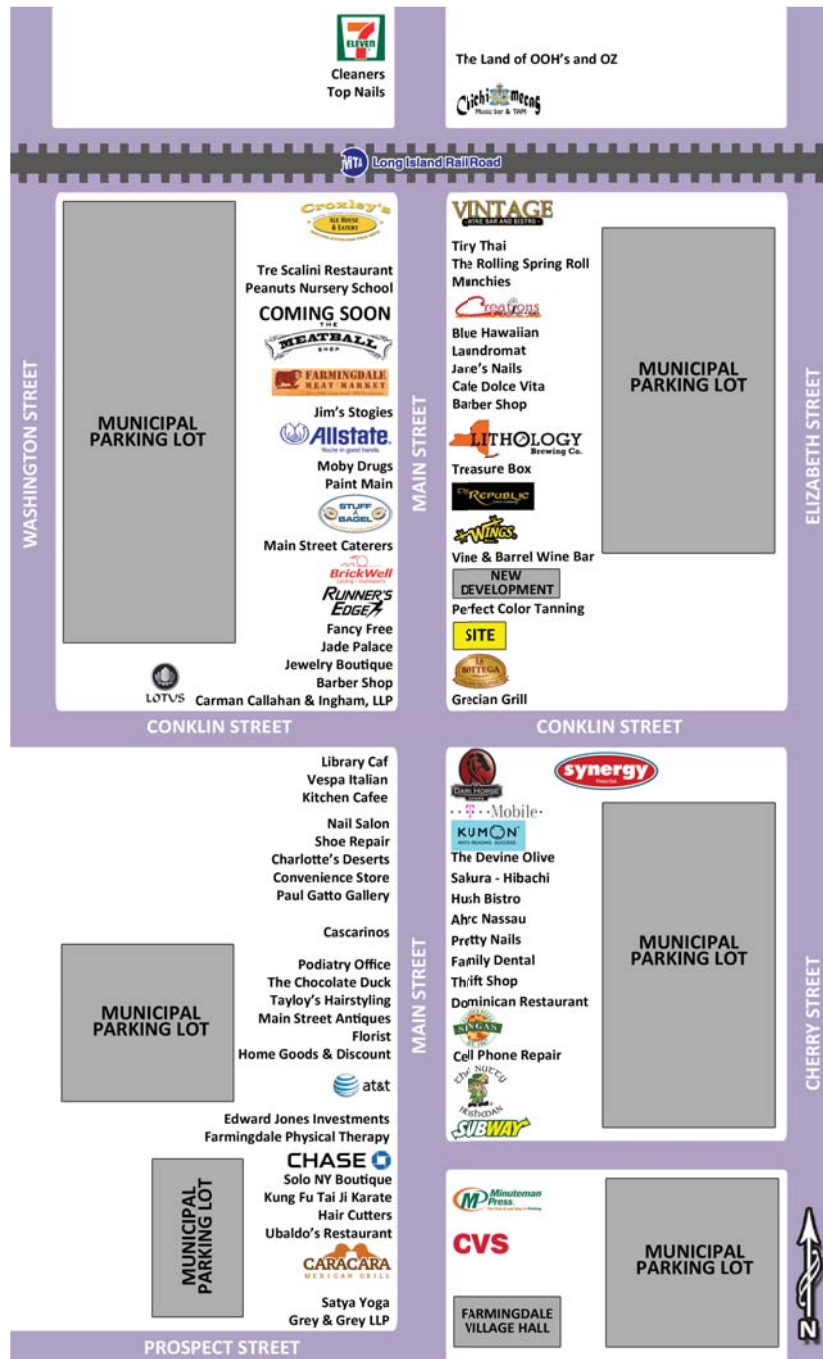
John Abbate | Associate | abbate@sabreny.com | T 516 874 8070 x1513

sabre.life

SABRE

farmingdale, ny

253 main street



For More Information:

John Abbate | Associate | abbate@sabreny.com | T 516 874 8070 x1513

Sabre Real Estate Group, LLC

500 Old Country Road Garden City NY 11530

500 Route 17 South Hasbrouck Heights NJ 07604

sabre.life

© Sabre Real Estate Group, LLC. This information has been obtained from sources believed reliable. We have not verified it and make no guarantee, warranty or representation about it. Any projections, opinions, assumptions or estimates used are for example only and do not represent the current or future performance of the property. You and your advisors should conduct a careful, independent investigation of the property to determine to your satisfaction the suitability of the property for your needs.

SABRE