

greenvale, ny

27 glen cove road

rare retail opportunity with excellent exposure | available for lease



DEMOGRAPHICS	1 MILE	3 MILES	5 MILES
Population	6,412	56,309	218,408
Median HHI	\$206,618	\$145,521	\$115,841
Daytime Population	5,313	37,552	146,676

Available	2,050 square feet (divisible)
Asking Rent	Upon Request
Taxes	TBD
Area Retail	Beach Bum Tanning, Wells Fargo, Equinox, T.J. Maxx, Lester's, Astoria Federal Savings Bank, Stop & Shop, Starbucks, Banana Republic, Blue Mercury, Vince Camuto and many more
Comments	<ul style="list-style-type: none"> • parking available on the side of the building • excellent exposure on Glen Cove Road with 40,520 vehicles per day • access to New York's most affluent shoppers • rare opportunity to enter the established and desirable Americana trade area

For More Information:

Douglas Bomzer | Senior Managing Director | bomzer@sabre.life | T 516 874 8070 x1509

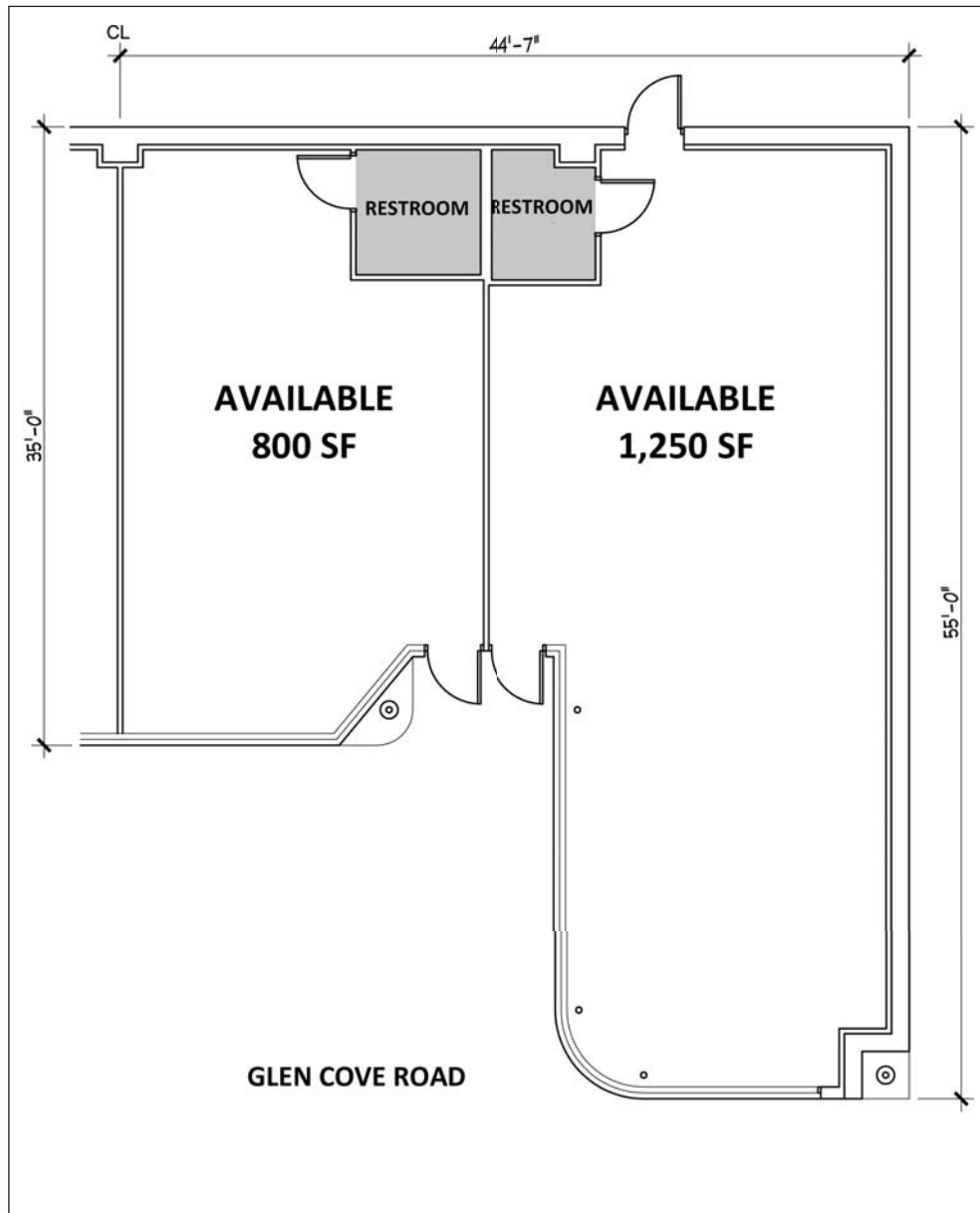
Jayson Siano | Managing Principal | siano@sabre.life | T 516 874 8070 x1501

sabre.life

SABRE

greenvale, ny

27 glen cove road



For More Information:

Douglas Bomzer | Senior Managing Director | bomzer@sabre.life | T 516 874 8070 x1509

Jayson Siano | Managing Principal | siano@sabre.life | T 516 874 8070 x1501

sabre.life

SABRE

greenvale, ny

27 glen cove road



For More Information:

Douglas Bomzer | Senior Managing Director | bomzer@sabre.life | T 516 874 8070 x1509

Jayson Siano | Managing Principal | siano@sabre.life | T 516 874 8070 x1501

Sabre Real Estate Group, LLC
500 Old Country Road Garden City NY 11530
500 Route 17 South Hasbrouck Heights NJ 07604

sabre.life

© Sabre Real Estate Group, LLC. This information has been obtained from sources believed reliable. We have not verified it and make no guarantee, warranty or representation about it. Any projections, opinions, assumptions or estimates used are for example only and do not represent the current or future performance of the property. You and your advisors should conduct a careful, independent investigation of the property to determine to your satisfaction the suitability of the property for your needs.

SABRE