

springfield gardens, ny

221-06 merrick boulevard

prime retail space available | for lease



DEMOGRAPHICS	.5 MILE	1 MILE	1.5 MILES
Population	13,564	47,059	118,287
Median HHI	\$78,989	\$76,076	\$72,237
Daytime Population	2,206	6,498	14,041

Available	3,000 square foot end cap
Asking Rent	Upon Request
Taxes	TBD
Area Retail	Walgreens, Home Depot, Stop & Shop, Subway, Bank of America, 7 Eleven, Key Foods, Duane Reade, UPS Store, Dunkin Donuts, Papa John's, Domino's, Chase and many more
Comments	<ul style="list-style-type: none"> • new construction • ample parking 60 spaces • located on a high volume corridor with traffic count of approximately 21,190 vehicles per day on Merrick Boulevard • easy access to the Belt Parkway, Q5, N4, and X63

For More Information:

George Skaliarinis | skaliarinis@sabre.life | T 718 484 2002 x1507

Mark Gallucci | gallucci@sabre.life | T 718 484 2002 x1508

Russel Helbling | helbling@sabre.life | T 718 484 2002 x1506

sabre.life



springfield gardens, ny

221-06 merrick boulevard



For More Information:

George Skaliarinis | skaliarinis@sabre.life | T 718 484 2002 x1507

Mark Gallucci | gallucci@sabre.life | T 718 484 2002 x1508

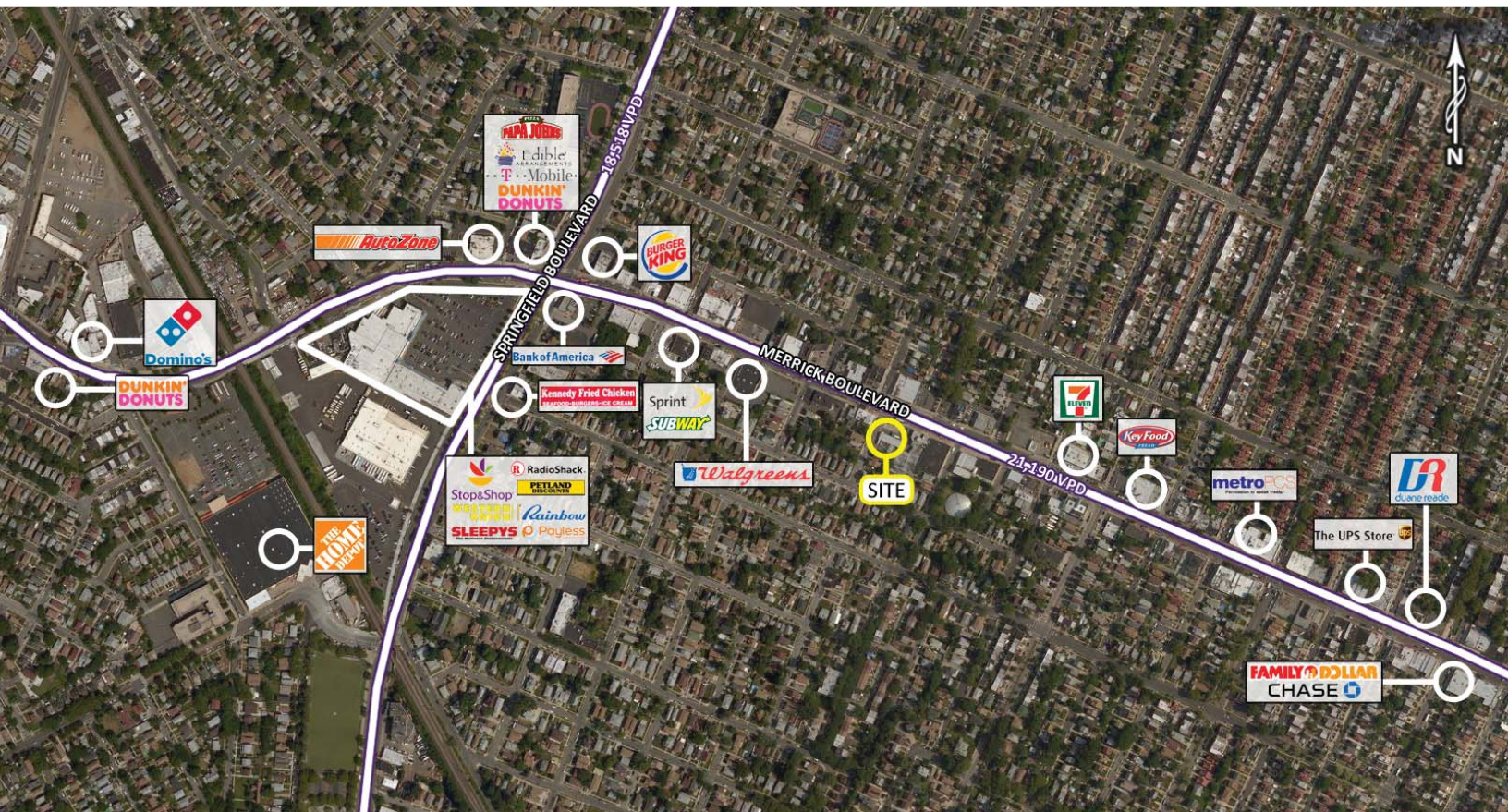
Russel Helbling | helbling@sabre.life | T 718 484 2002 x1506

sabre.life



springfield gardens, ny

221-06 merrick boulevard



For More Information:

George Skaliarinis | skaliarinis@sabre.life | T 718 484 2002 x1507

Mark Gallucci | gallucci@sabre.life | T 718 484 2002 x1508

Russel Helbling | helbling@sabre.life | T 718 484 2002 x1506

Sabre Real Estate Group, LLC

500 Old Country Road Garden City NY 11530

500 Route 17 South Hasbrouck Heights NJ 07604

sabre.life



© Sabre Real Estate Group, LLC. This information has been obtained from sources believed reliable. We have not verified it and make no guarantee, warranty or representation about it. Any projections, opinions, assumptions or estimates used are for example only and do not represent the current or future performance of the property. You and your advisors should conduct a careful, independent investigation of the property to determine to your satisfaction the suitability of the property for your needs.