

bogota, nj

238 west fort lee road

freestanding building with parking situated along hackensack river | for lease



DEMOGRAPHICS	1 MILE	3 MILES	5 MILES
Population	29,897	203,626	565,727
Median HHI	\$76,489	\$87,161	\$87,338
Daytime Population	32,573	189,138	452,449

Address	238 West Fort Lee Road, Bogota, NJ
Available	6,000 square foot freestanding building
Lot	.875 acres
Asking Rent	Upon Request
Area Retail	Ice House, Bowler City, Wells Fargo, TD Bank, Costco, Pep Boys, AutoZone, CVS, Dunkin', PNC Bank, McDonald's, and many more
Comments	<ul style="list-style-type: none">• 18 foot clear ceiling• all uses including drive thru• 40 parking spaces• over 3,000 new apartment units under development in immediate area• draw from Court Houses and Hackensack University Hospital (7,800 employees)• West Fort Lee Rd is continuation of Court Street which connects to Hackensack and is used as a commuter road for NYC workers• close proximity to buses and train station

For More Information:

James Aug | aug@sabre.life | T 201 249 8911 x 1540

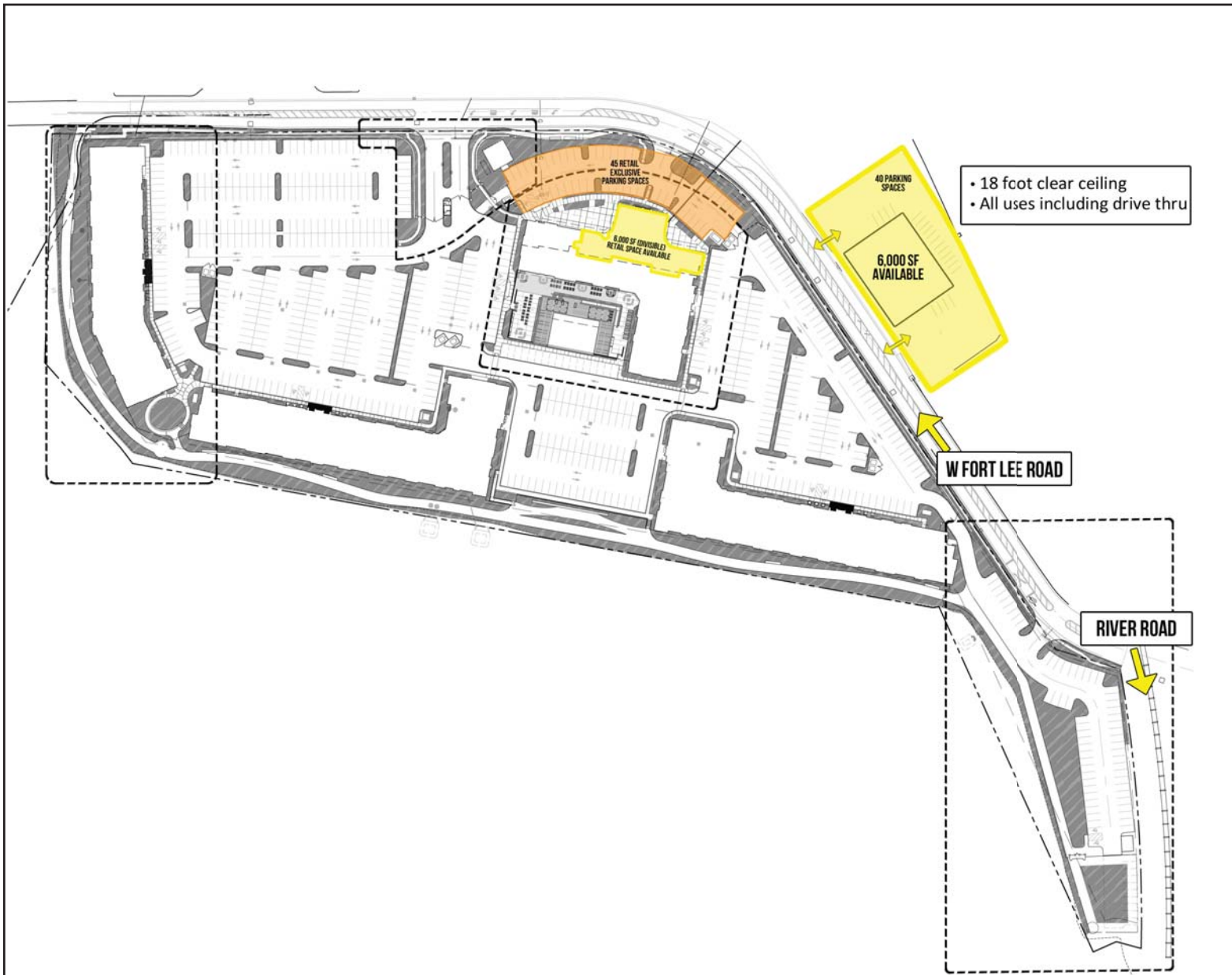
sabre.life



bogota, nj

238 west fort lee road

PARKING PLAN



For More Information:

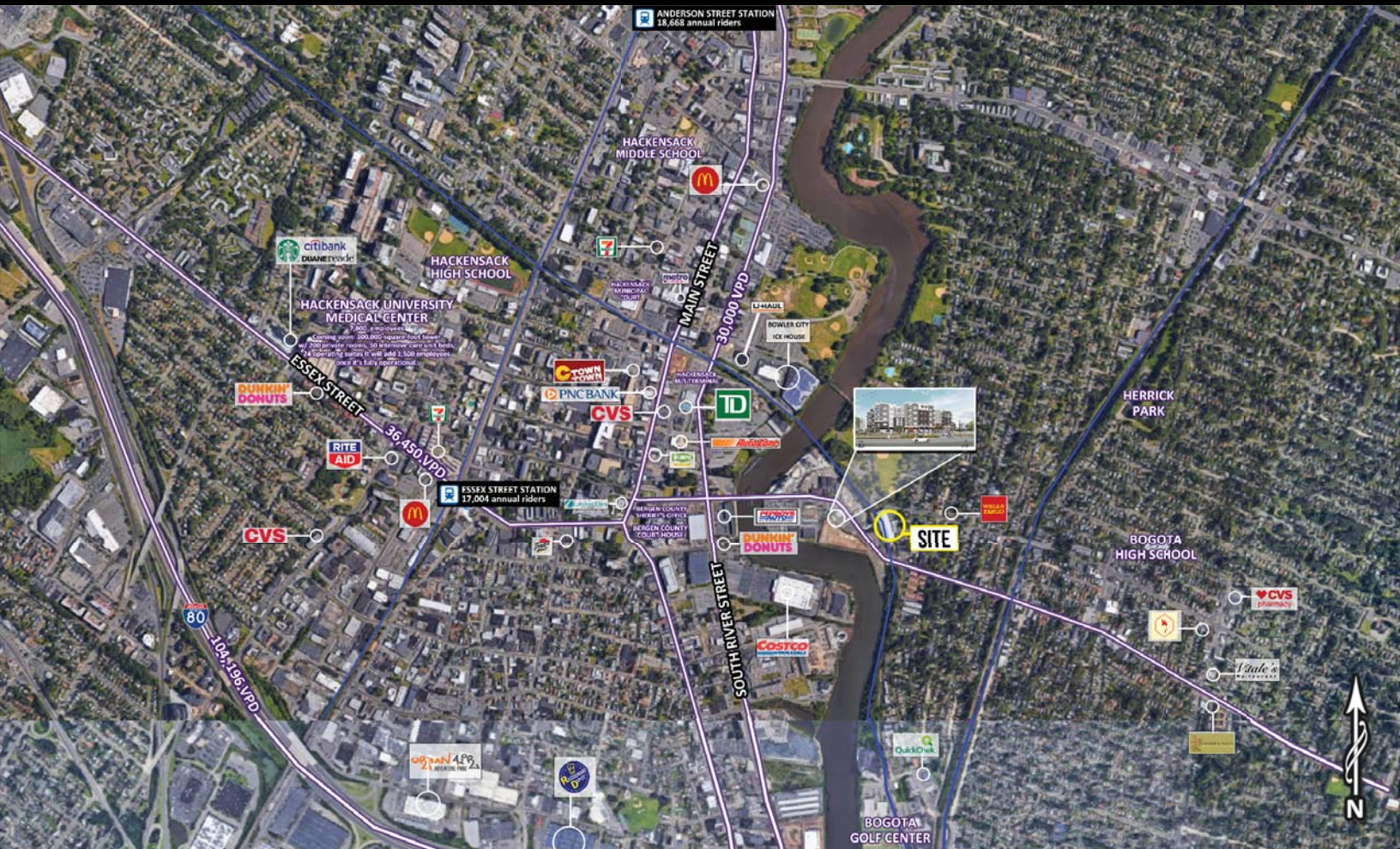
James Aug | aug@sabre.life | T 201 249 8911 x 1540

sabre.life



bogota, nj

238 west fort lee road



For More Information:

James Aug | aug@sabre.life | T 201 249 8911 x 1540

Sabre Real Estate Group, LLC

500 Old Country Road Garden City NY 11530

500 Route 17 South Hasbrouck Heights NJ 07604

135 Madison Ave 8th Floor New York NY 10016

sabre.life



© Sabre Real Estate Group, LLC. This information has been obtained from sources believed reliable. We have not verified it and make no guarantee, warranty or representation about it. Any projections, opinions, assumptions or estimates used are for example only and do not represent the current or future performance of the property. You and your advisors should conduct a careful, independent investigation of the property to determine to your satisfaction the suitability of the property for your needs.