

## Franklin Towne Center, Franklin Park, NJ



## Prime retail space available | FOR LEASE

**ADDRESS**

3391 NJ-27 Franklin Towne Center,  
Franklin Park, NJ

**AVAILABLE**

1,417 - 48,000 square feet

**ASKING RENT**

Upon Request

**EXTRAS**

\$8.53 per square foot

**CO-TENANTS**

Ocean State Job Lot, Club Metro USA,  
Samudhra Restaurant,  
Confectionately Yours

**AREA RETAIL**

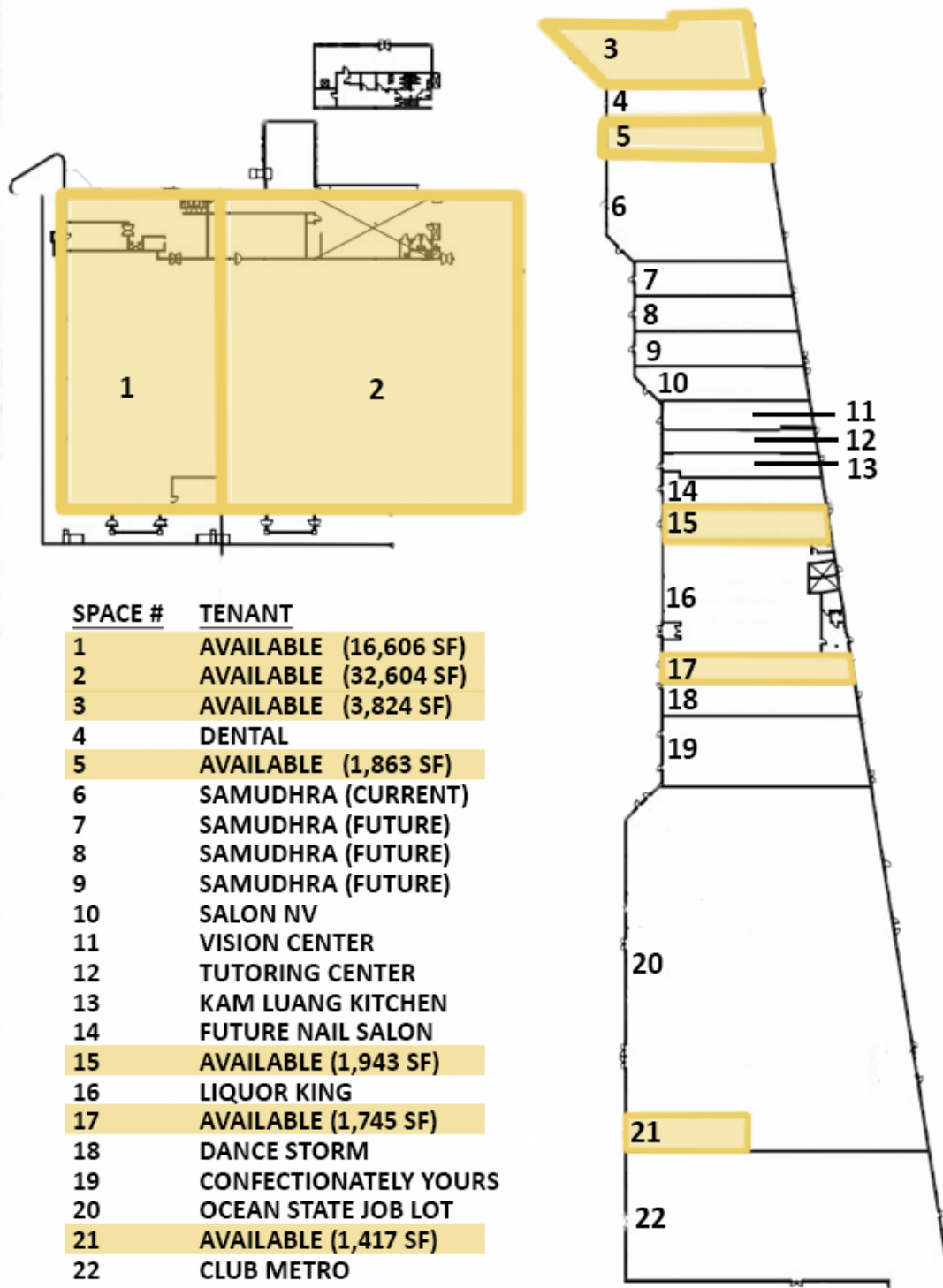
Super Stop & Shop, Sonic, Chase  
Bank, CVS, Wawa, and Apna Bazaar.

Demographics	1 mile	3 miles	5 miles
Population	9,083	47,401	109,302
Median HHI	\$100,091	\$99,560	\$108,858
Daytime Population	1,580	10,226	42,942

- 1,036 feet of frontage on Route 27
- 24,752 vehicles pass the site per day
- Conveniently located neighborhood center
- Terrific access from Route 27 and South Middlebush Road

## Franklin Towne Center, Franklin Park, NJ

## SITE PLAN





S

# FOR LEASE

## Franklin Towne Center, Franklin Park, NJ

### FACADE PHOTOS



SABRE

Justin Korinis  
korinis@sabre.life | T 201 249 8911 x 1545  
Dina Santarelli  
santarelli@sabre.life | T 201 249 8911 x 1543

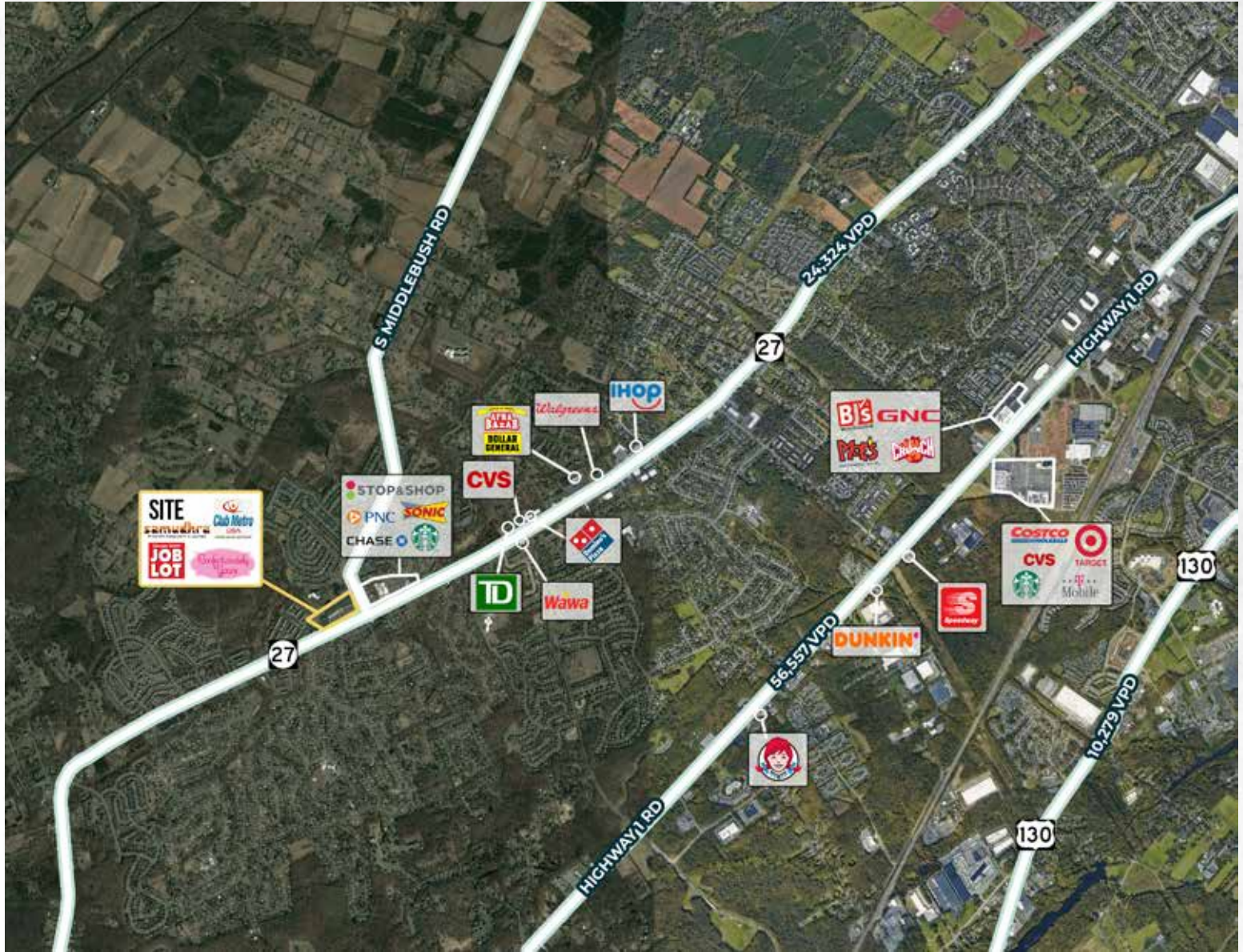
Sean Pyle  
pyle@sabre.life | T 201 249 8911 x 1541

sabre.life



# FOR LEASE

## Franklin Towne Center, Franklin Park, NJ



**SABRE**

Justin Korinis  
korinis@sabre.life | T 201 249 8911 x 1545  
Dina Santarelli  
santarelli@sabre.life | T 201 249 8911 x 1543

Sean Pyle  
pyle@sabre.life | T 201 249 8911 x 1541

SABRE Real Estate Group, LLC | 500 Old Country Road Garden City NY 11530

sabre.life

© SABRE Real Estate Group, LLC. This information has been obtained from sources believed reliable. We have not verified it and make no guarantee, warranty or representation about it. Any projections, opinions, assumptions or estimates used are for example only and do not represent the current or future performance of the property. You and your advisors should conduct a careful, independent investigation of the property to determine to your satisfaction the suitability of the property for your needs.