

sayville, ny

sayville plaza

prime retail opportunities available | for lease



DEMOGRAPHICS	1 MILE	3 MILES	5 MILES
Population	9,569	67,709	169,599
Median HHI	\$87,265	\$106,873	\$103,001
Daytime Population	10,272	52,440	88,523

Address	5185 Sunrise Highway N/W/C of Johnson Avenue, Sayville NY
Available	39,038 square feet (divisible)
Asking Rent	Upon Request
Co-Tenants	Bed Bath & Beyond, Old Navy, Panera Bread, Chipotle, GoHealth Urgent Care, Sprint, The Vitamin Shoppe, Jennifer Furniture, F45 Training, Proposed Harbor Freight, Proposed Boot Barn
Area Retail	Stop & Shop, Target, Petco, Big Lots, Staples, Marshalls, Best Buy, The Home Depot, LA Fitness, Walgreens, Dollar Tree, CVS, Starbucks, CityMD, JOANN Fabrics, Costco, Savers, and many more
Comments	<ul style="list-style-type: none"> located on the primary East/West thoroughfare through this region of Long Island supported by a densely-populated residential and retail neighborhood

For More Information:

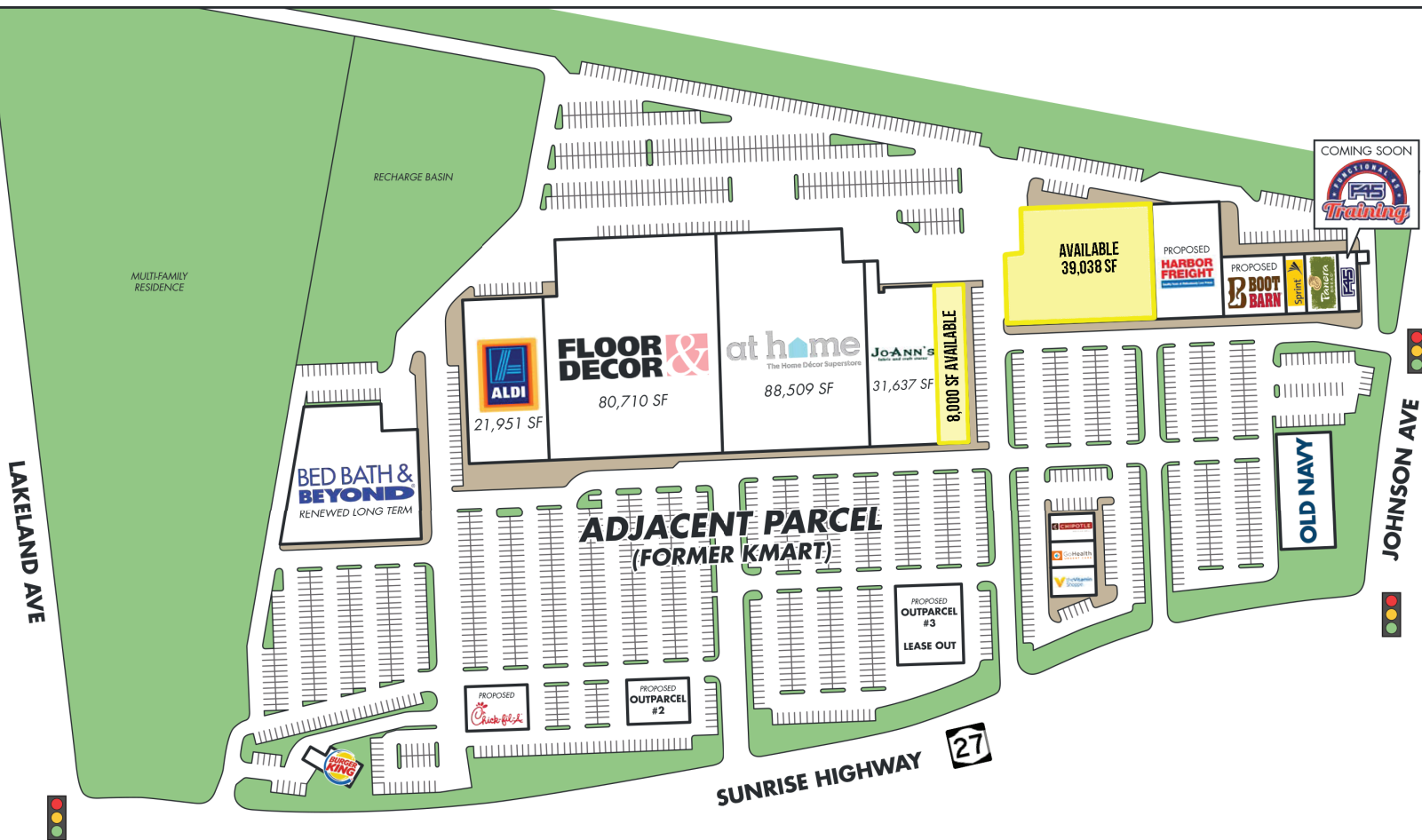
William Diakakis | diakakis@sabre.life | T 516 874 8070 x1521

Stu Fagen | fagen@sabre.life | T 516 874 8070 x1503

sabre.life



sayville plaza



For More Information:

William Diakakis | diakakis@sabre.life | T 516 874 8070 x1521

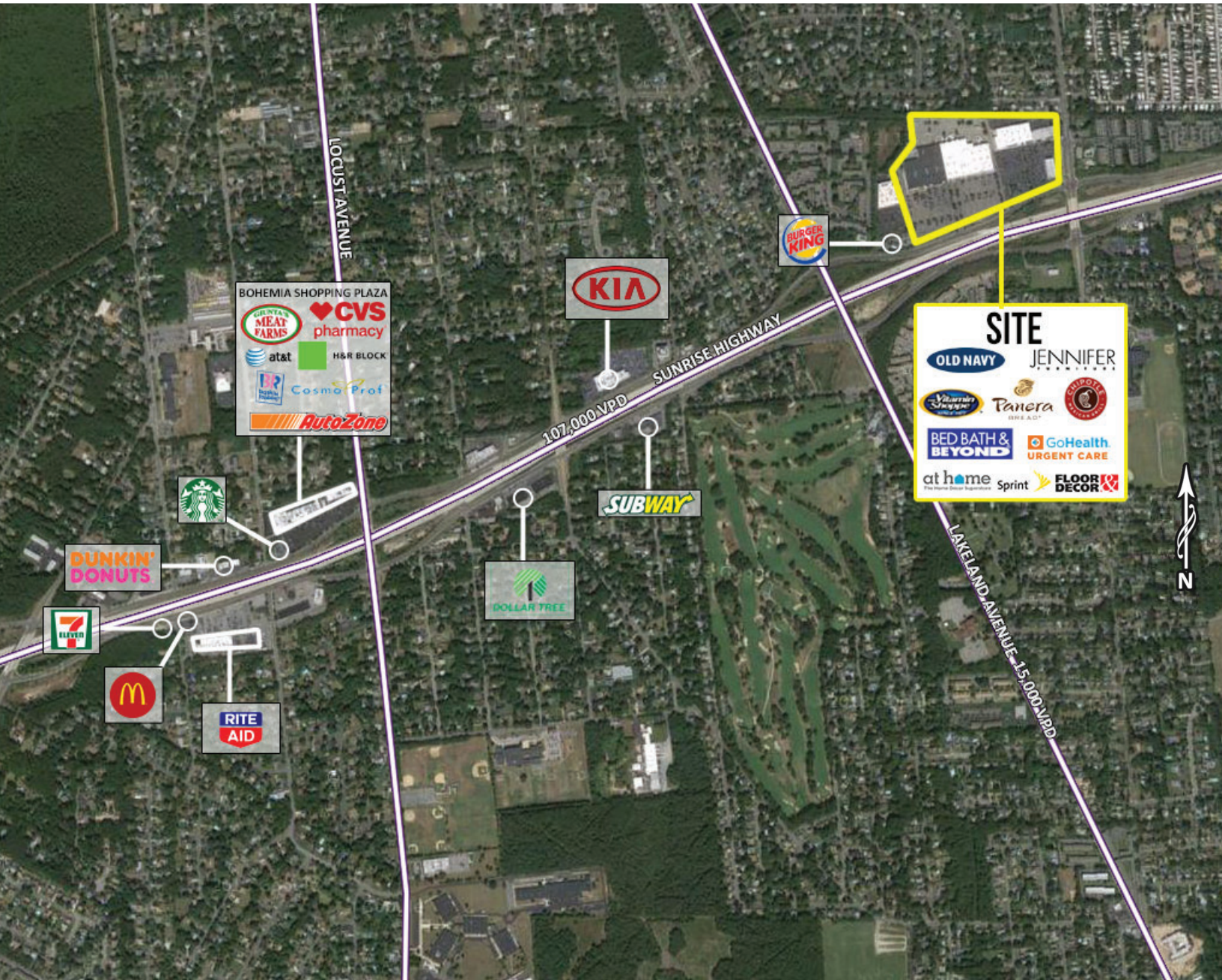
Stu Fagen | fagen@sabre.life | T 516 874 8070 x1503

sabre.life



sayville, ny

sayville plaza



For More Information:

William Diakakis | diakakis@sabre.life | T 516 874 8070 x1521

Stu Fagen | fagen@sabre.life | T 516 874 8070 x1503

Sabre Real Estate Group, LLC

500 Old Country Road Garden City NY 11530

500 Route 17 South Hasbrouck Heights NJ 07604

135 Madison Ave 8th Floor New York NY 10016

sabre.life



© Sabre Real Estate Group, LLC. This information has been obtained from sources believed reliable. We have not verified it and make no guarantee, warranty or representation about it. Any projections, opinions, assumptions or estimates used are for example only and do not represent the current or future performance of the property. You and your advisors should conduct a careful, independent investigation of the property to determine to your satisfaction the suitability of the property for your needs.