

# woodbury, ny

## woodbury crossing

new ground up development at major intersection in Woodbury



DEMOGRAPHICS	1 MILE	3 MILES	5 MILES
Population	9,114	70,049	201,106
Median HHI	\$136,853	\$126,609	\$108,259
Daytime Population	18,134	110,452	318,508

Available	1,785 square feet 1,800 square feet 2,085 square feet 2,637 square feet 3,995 square feet	} can be combined up to 6,522 SF
Asking Rent	Upon Request	
Extras	+/- \$15.00 per square foot	
Area Retail	SoulCycle, Rock Pilates, Pure Barre, Equinox, Athleta, Chop't, Starbucks, Bluemercury, Francesca's Collection, White House Black Market, 18 8 Fine Men's Salon, Anthony's Coal Fired Pizza, BurgerFi, Party City, Chase Bank, Roslyn Savings Bank, Stop & Shop, Mystique Boutique, Omaha Steaks, Iavarone Brothers	
Comments	<ul style="list-style-type: none"> <li>• brand new development projected for completion Q4 2020</li> <li>• popular retail corridor with an exceptional national presence - amazing co-tenancy!</li> <li>• robust income and residential population in one of Long Island's most desirable neighborhoods</li> <li>• busy lighted intersection with great visibility; easily accessible from Seaford Oyster Bay Expressway, Long Island Expressway, and Northern State Parkway</li> </ul>	

**For More Information:**

**William Diakakis** | diakakis@sabre.life | T 516 874 8070 x1521

**Russel Helbling** | helbling@sabre.life | T 516 874 8070 x1506

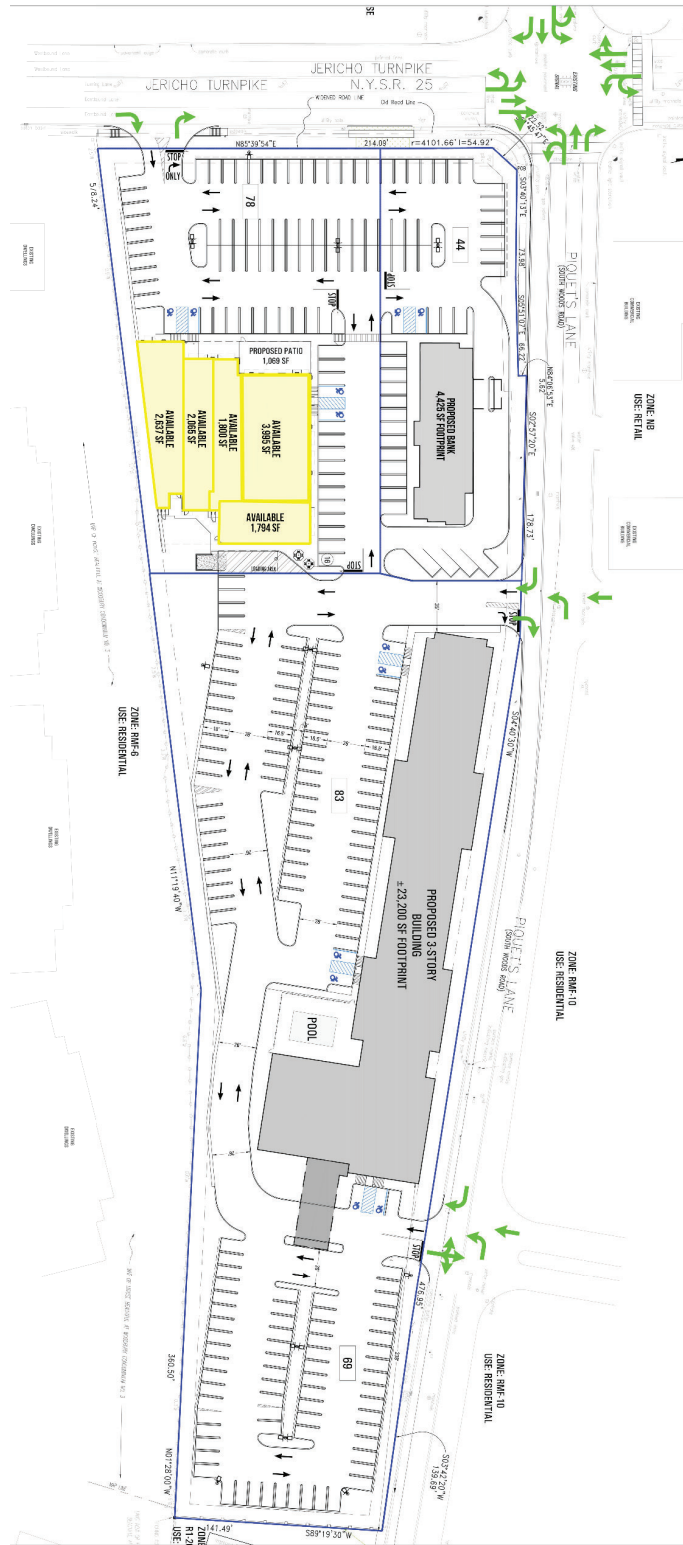
**Jayson Siano** | sjano@sabre.life | T 516 874 8070 x1501

**sabre.life**



# woodbury, ny

## 7940 jericho turnpike



William Diakakis | diakakis@sabre.life | T 516 874 8070 x1521

Russel Helbling | helbling@sabre.life | T 516 874 8070 x1506

Jayson Siano | siano@sabre.life | T 516 874 8070 x1501

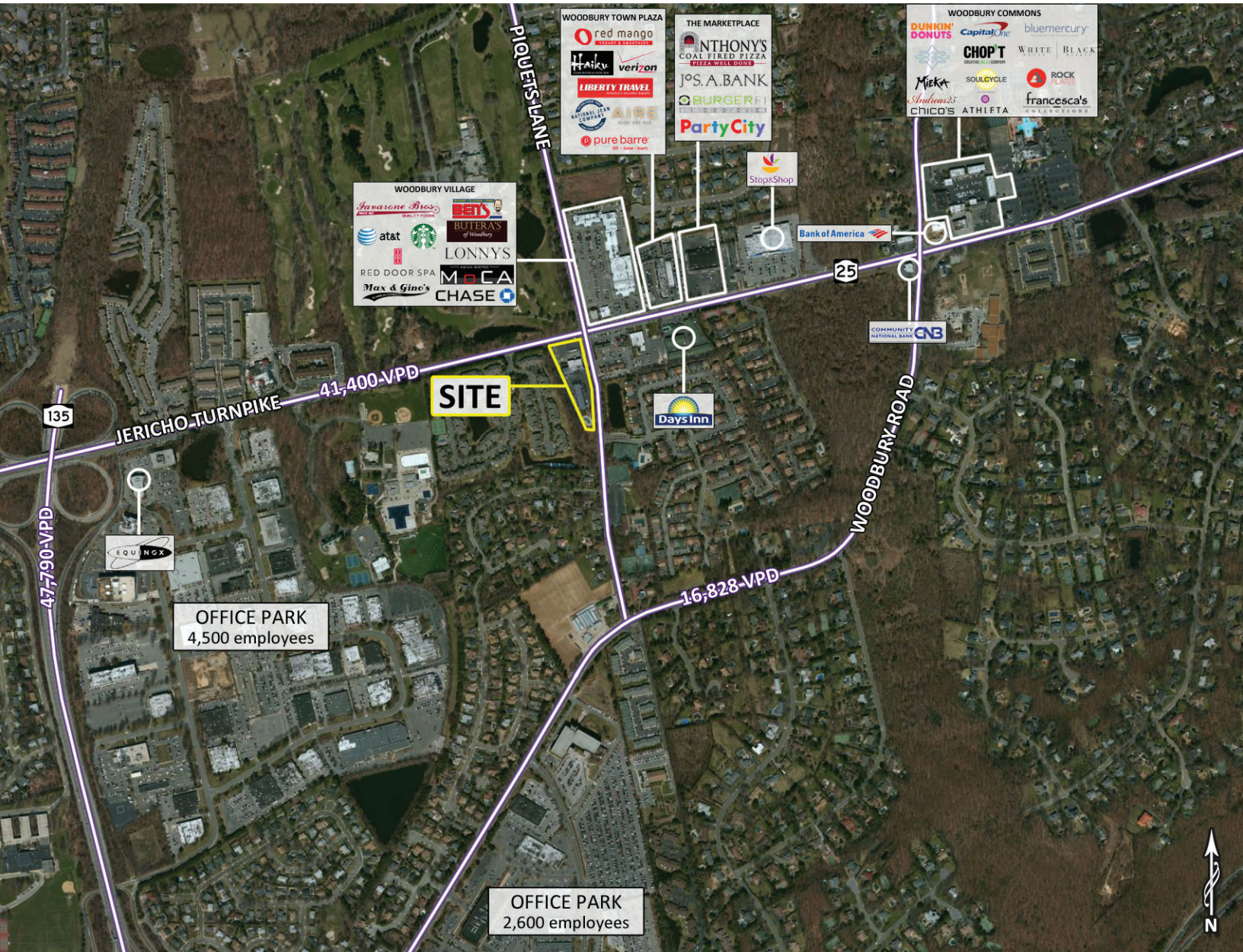
**sabre.life**





# woodbury, ny

## 7940 jericho turnpike



William Diakakis | diakakis@sabre.life | T 516 874 8070 x1521

Russel Helbling | helbling@sabre.life | T 516 874 8070 x1506

Jayson Siano | siano@sabre.life | T 516 874 8070 x1501

Sabre Real Estate Group, LLC

500 Old Country Road Garden City NY 11530

500 Route 17 South Hasbrouck Heights NJ 07604

135 Madison Avenue 8th Floor New York NY 10016

**sabre.life**

© Sabre Real Estate Group, LLC. This information has been obtained from sources believed reliable. We have not verified it and make no guarantee, warranty or representation about it. Any projections, opinions, assumptions or estimates used are for example only and do not represent the current or future performance of the property. You and your advisors should conduct a careful, independent investigation of the property to determine to your satisfaction the suitability of the property for your needs.

# SABRE