

yorktown, ny

3200 crompond road

join Lowe's, Starbucks, AAA in a New Shopping Center off the Taconic Pkwy



DEMOGRAPHICS	1 MILE	3 MILES	5 MILES
Population	3,058	35,292	85,465
Median HHI	\$147,545	\$115,460	\$113,575
Daytime Population	1,744	14,408	26,591

Location	3200 Crompond Road (Route 202), Yorktown, NY 10598
Available	2,908 square foot pad site with drive-thru
Property Size	+/- 25 acres
Co-Tenants	Lowe's Home improvement, Starbucks, AAA, Slice Pizzeria, & a 12,500 SF Retail Store
Area Retail	BJ'S Wholesale Club, Staples, McDonald's, AC Moore, Dunkin Donuts, Party City, AFC Urgent Care, Walmart, The Home Depot, Mattress Firm, Stop & Shop, AutoZone, and many more
Comments	<ul style="list-style-type: none">• located on the corner of the Taconic State Parkway and Crompond Road which sees over 71,000 vehicles per day combined• sewers available for pad site

For More Information:

Kenneth Breslin | breslin@sabre.life | T 516 874 8070 x1500

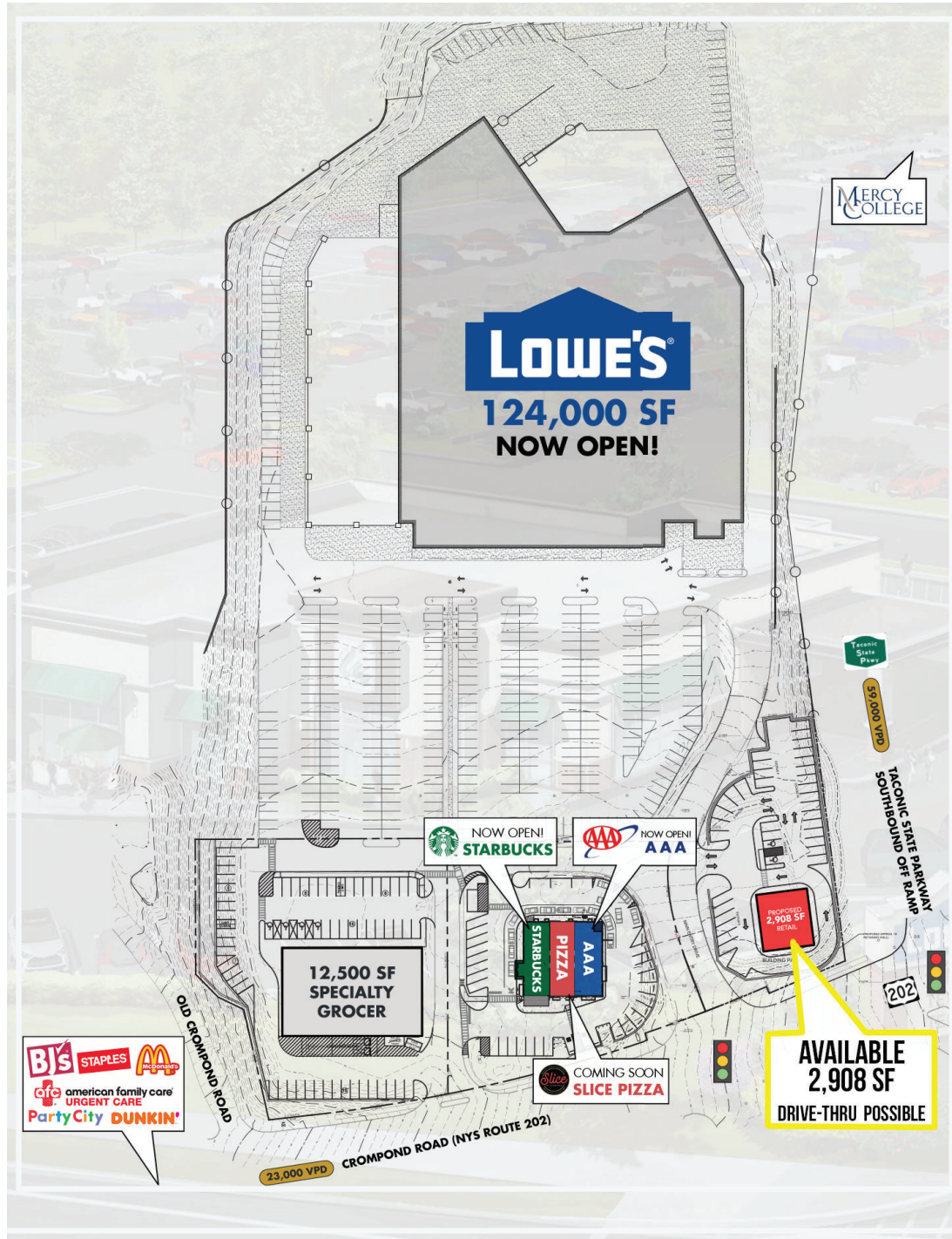
sabre.life



yorktown, ny

3200 crompond road

SITE PLAN:



For More Information:

Kenneth Breslin | breslin@sabre.life | T 516 874 8070 x1500

sabre.life

SABRE
REAL ESTATE

yorktown, ny

3200 crompond road



PAD SITE A
COMING SOON:
12,500 SF
RETAIL STORE

PAD SITE B



PAD SITE C
PROPOSED
w/ DRIVE-THRU
2,908 SF

GROMPOND RD



TACONIC STATE PKWY



SOUTHBOUND OFF RAMP



For More Information:

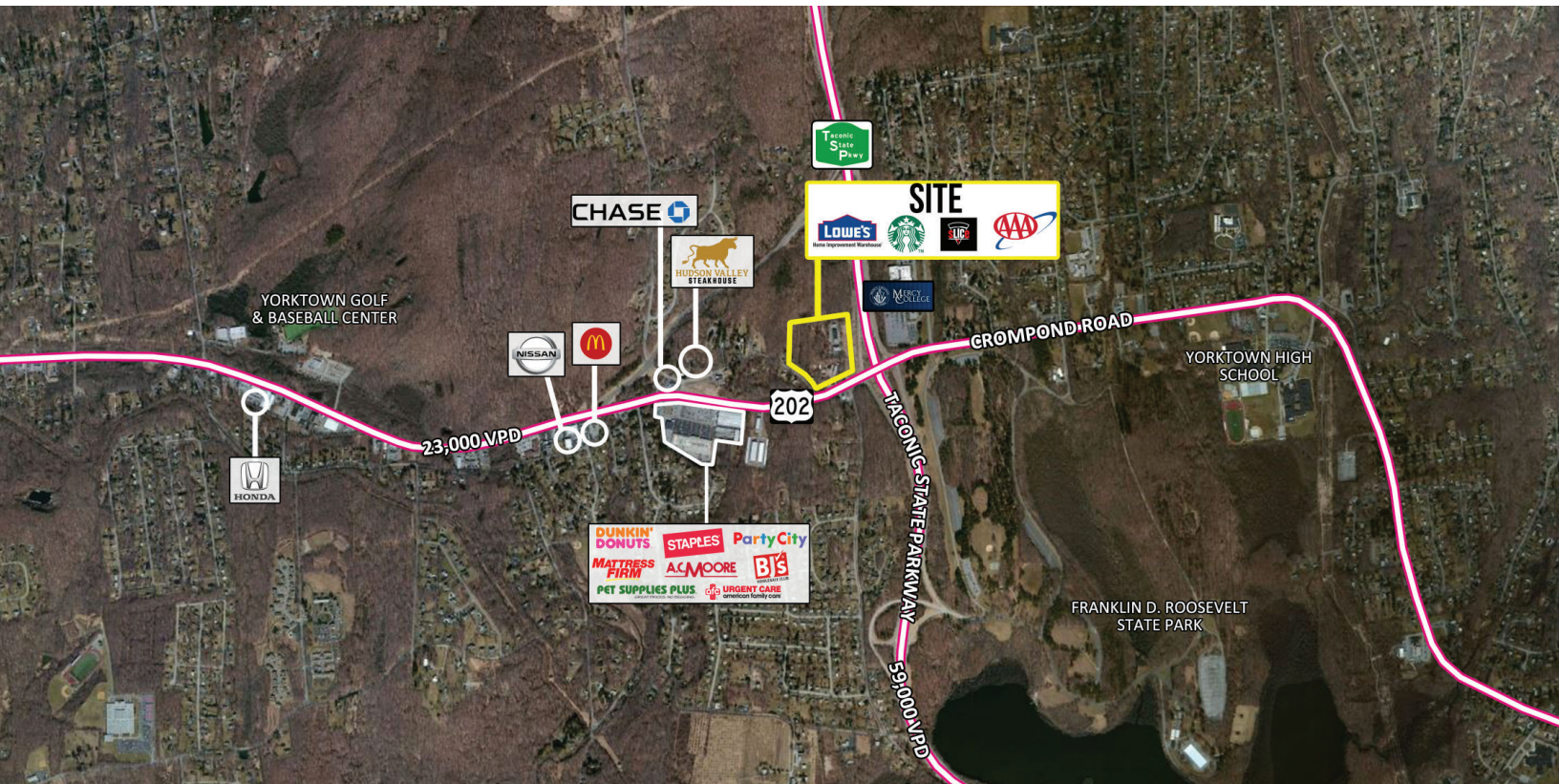
Kenneth Breslin | breslin@sabre.life | T 516 874 8070 x1500

sabre.life



yorktown, ny

3200 crompond road



For More Information:

Kenneth Breslin | breslin@sabre.life | T 516 874 8070 x1500

Sabre Real Estate Group, LLC

500 Old Country Road Garden City NY 11530

500 Route 17 South Hasbrouck Heights NJ 07604



sabre.life

© Sabre Real Estate Group, LLC. This information has been obtained from sources believed reliable. We have not verified it and make no guarantee, warranty or representation about it. Any projections, opinions, assumptions or estimates used are for example only and do not represent the current or future performance of the property. You and your advisors should conduct a careful, independent investigation of the property to determine to your satisfaction the suitability of the property for your needs.