

FOR LEASE

SI

31ST DRIVE

TACO BELL
AVAILABLE
1,718 SF



31ST ROAD

FARRINGTON STREET



WHITESTONE EXPRESSWAY

31-18 Farrington Street, Flushing, NY

1,718 SF AVAILABLE | FOR LEASE

Billy Diakakis
diakakis@sabre.life
T 516.874.8070x1521

SABRE

FOR LEASE

31-18 Farrington Street,
Flushing, NY



RETAIL SPACE IN STOP AND SHOP ANCHORED CENTER AVAILABLE | FOR LEASE

ADDRESS: 31-18 Farrington Street, Flushing, NY

SPACE AVAILABLE: 1,718 SF

ASKING RENT: Upon Request

EXTRAS: \$14.00 PSF

CO-TENANTS: Stop & Shop, Taco Bell, Liquor Store, PHO metro

AREA RETAIL:

Dunkin Donuts, Queens County Bank (New York Community Bank), Sterling National Bank, GNC, Wendy's, Popeyes, Party City, Petland Discounts, McDonalds, and many more

Demographics	1 mile	3 miles	5 miles
Population	15,825	85,342	159,875
Median HHI	\$58,095	\$62,663	\$65,093
Daytime Population	6,007	24,951	37,630

- Highly visible pylon signage
- Directly on the service road for the Whitestone Expressway, with 139,632 vehicles passing the site daily
- 364 parking spaces
- 46' of frontage

SABRE

Billy Diakakis
diakakis@sabre.life
T 516.874.8070x1521

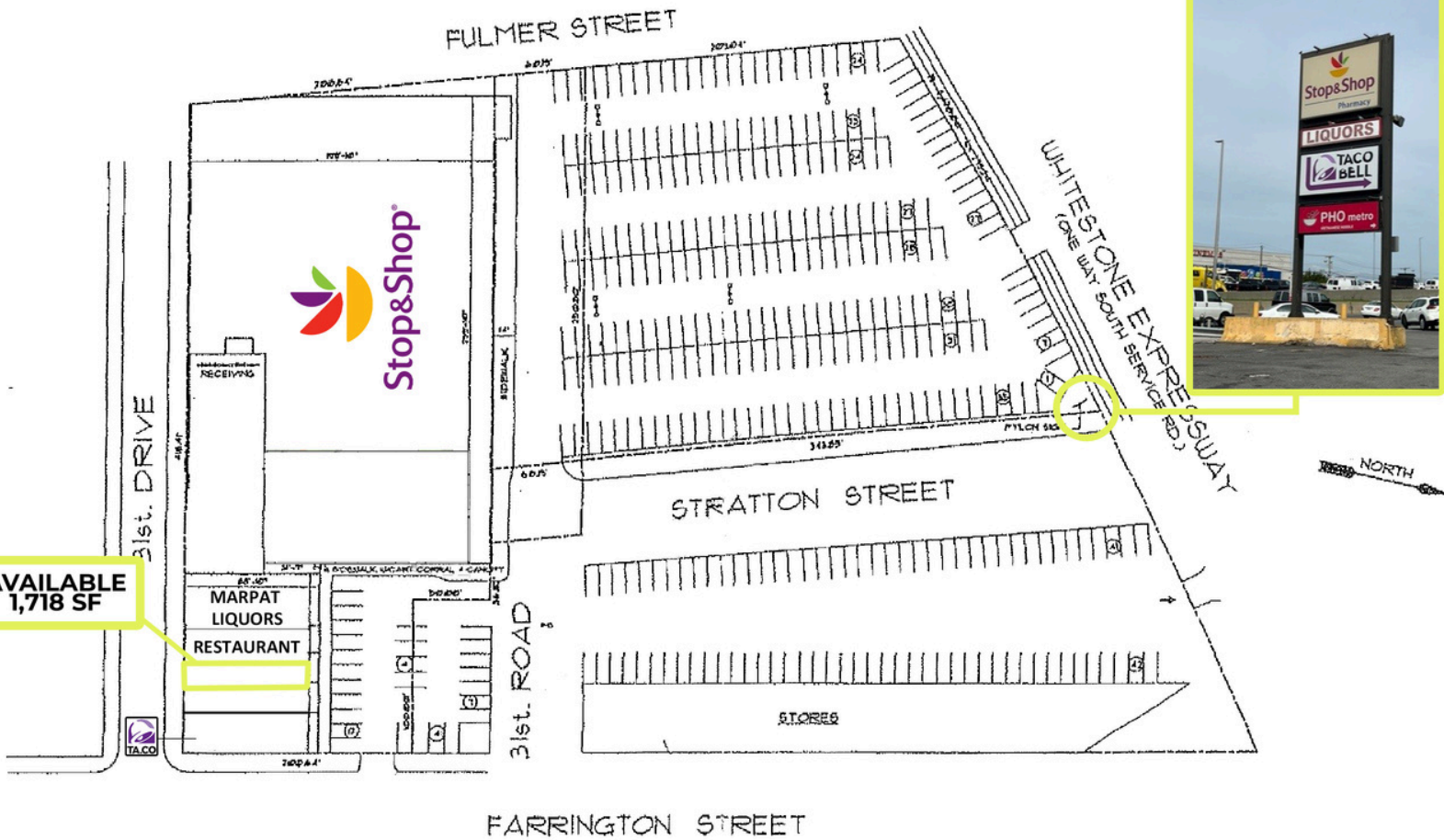
sabre.life

FOR LEASE

31-18 Farrington Street,
Flushing, NY

SITE PLAN

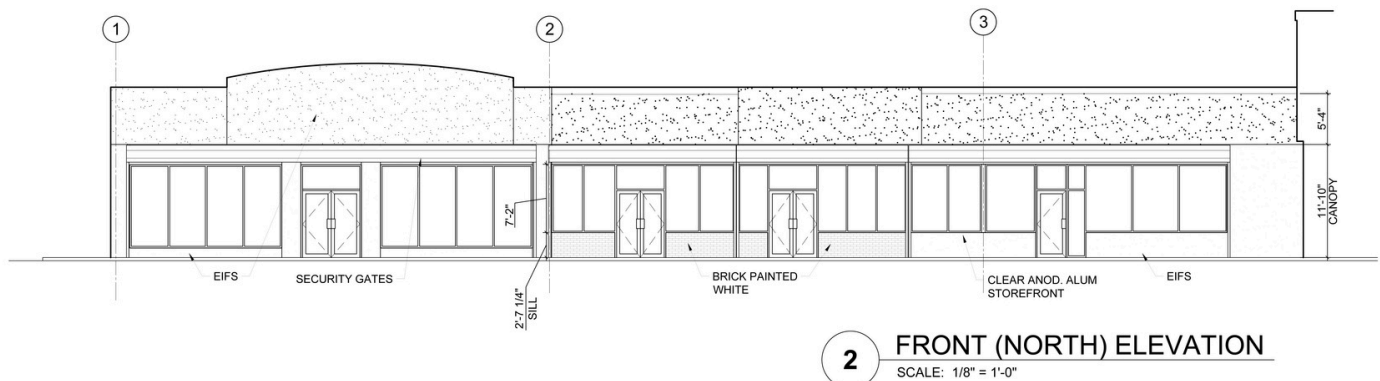
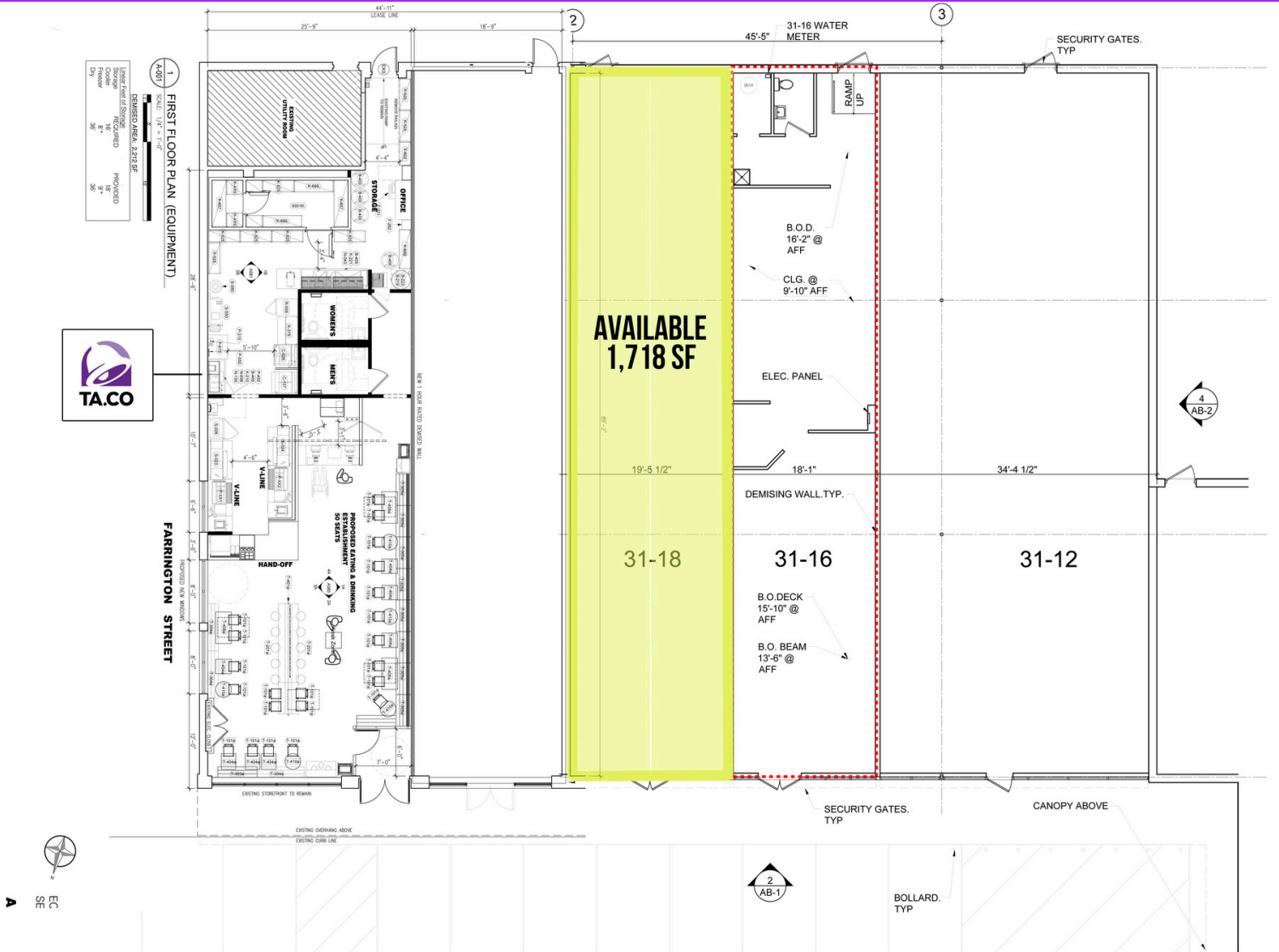
HIGHLY VISIBLE PYLON SIGN WITH
EXPOSURE TO 153,287 VEHICLES PER DAY
ON WHITESTONE EXPRESSWAY



FOR LEASE

31-18 Farrington Street,
Flushing, NY

FLOOR PLAN



FOR LEASE

31-18 Farrington Street,
Flushing, NY

PROPERTY PHOTO



SABRE

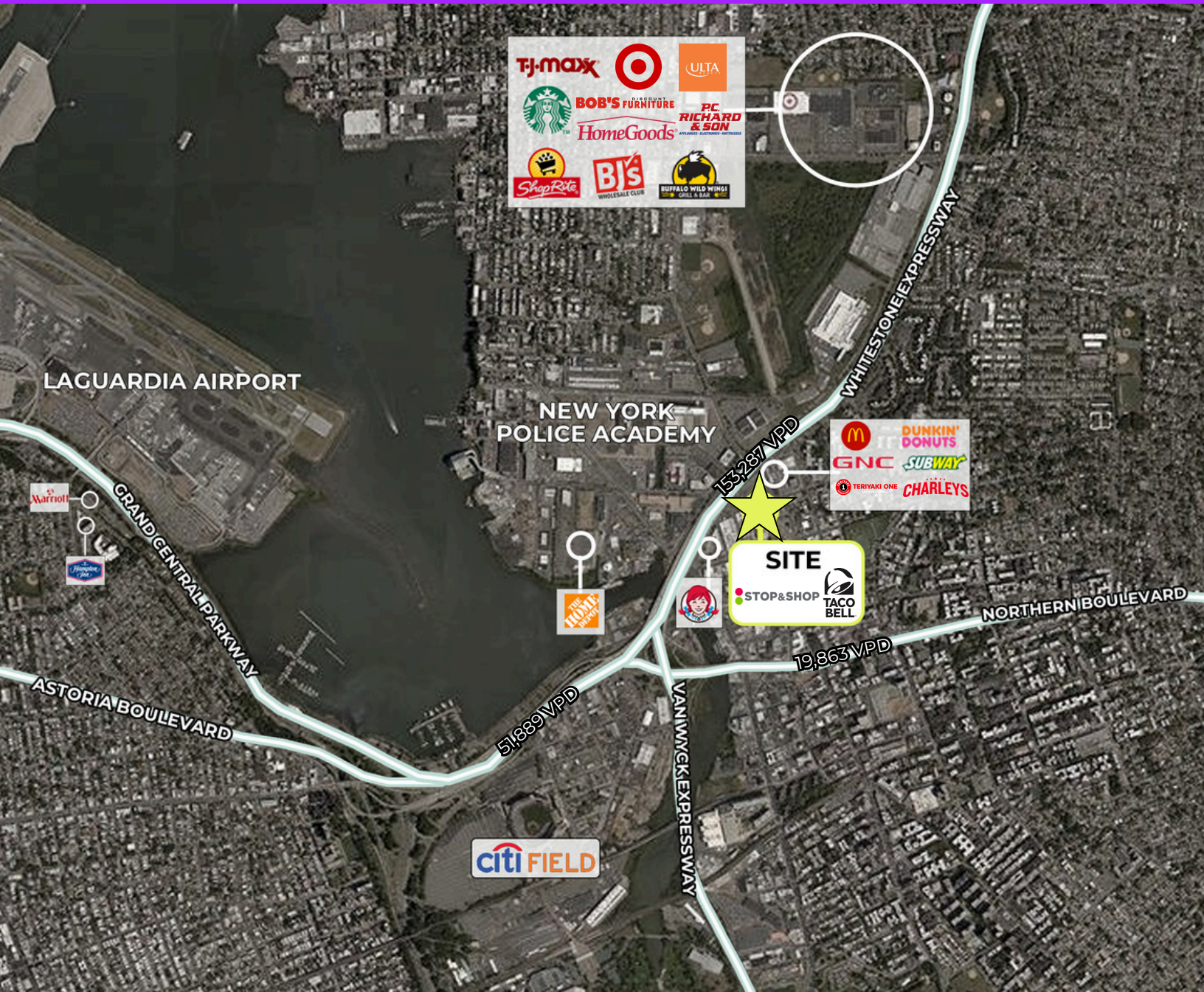
Billy Diakakis
diakakis@sabre.life
T 516.874.8070x1521

sabre.life

FOR LEASE

31-18 Farrington Street,
Flushing, NY

AERIAL



SABRE

Billy Diakakis
diakakis@sabre.life
T 516.874.8070x1521

SABRE Real Estate Group, LLC | 500 Old Country Road Garden City NY 11530

© SABRE Real Estate Group, LLC. This information has been obtained from sources believed reliable. We have not verified it and make no guarantee, warranty or representation about it. Any projections, opinions, assumptions or estimates used are for example only and do not represent the current or future performance of the property. You and your advisors should conduct a careful, independent investigation of the property to determine to your satisfaction the suitability of the property for your needs.

sabre.life